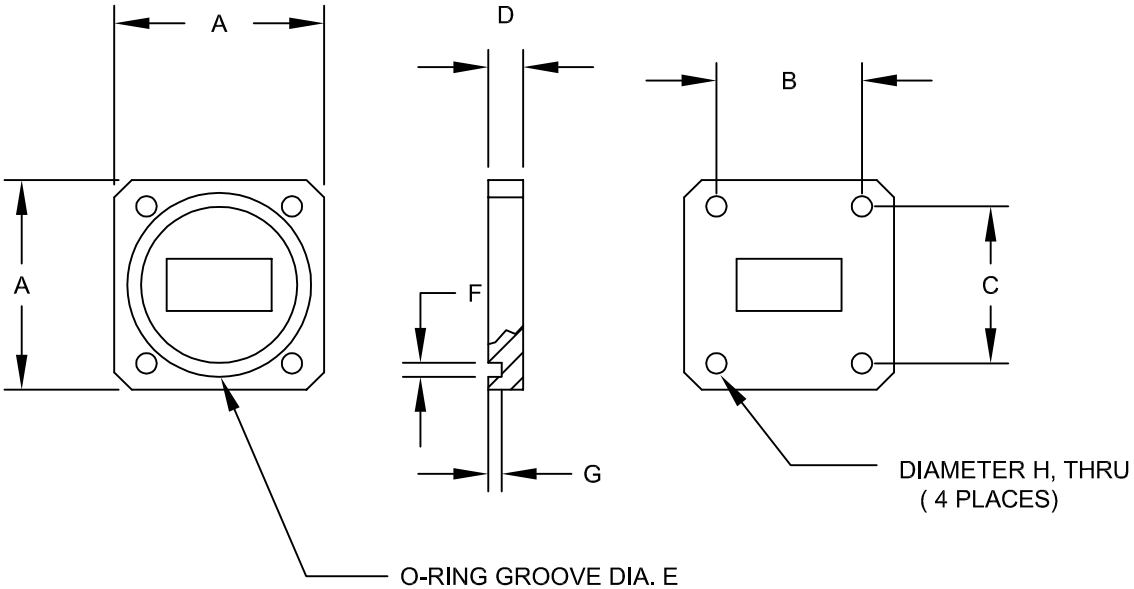


SPECIFICATIONS

- 1- VSWR 1.10:1 MAX.
- 2- FREQUENCY - FULL WAVEGUIDE BAND
- 3- PRESSURIZATION 20 PSIG
- 4- ENVIRONMENT OUTDOORS
- 5- TEMPERATURE -40 TO 60 DEGREES C
- 6- MATERIAL - BRASS
- 7- TOLERENCES (UNLESS OTHERWISE SPECIFIED)
 - 2 PLACES +/- 0.020 INCHES
 - 3 PLACES +/- 0.005 INCHES



WR	POWER WATTS	PART NUMBER	DIMENSIONS (INCHES)							
			A	B	C	D	E	F	G	H
22	75	2388-0000	0.75	0.500	0.530	0.100	0.574	0.081	0.056	0.117
28	125	2333-0000	0.75	0.500	0.530	0.100	0.574	0.081	0.056	0.117
42	250	2334-0000	0.875	0.640	0.670	0.150	0.730	0.065	0.048	0.117
51	1000	2335-0000	1.312	0.956	0.994	0.185	1.070	0.160	0.104	0.145
62	1500	2336-0000	1.312	0.994	0.956	0.185	1.195	0.160	0.105	0.145
75	2200	2112-0000	1.50	1.040	1.122	0.185	1.314	0.050	0.050	0.145
90	2500	2337-0000	1.625	1.220	1.280	0.185	1.540	0.100	0.073	0.170
112	2850	2338-0000	1.875	1.352	1.474	0.200	1.765	0.102	0.069	0.170

MICROWAVE COMPONENTS AND SYSTEMS INC.
583 BERLIN ROAD, MARLBORO MA

**SQUARE FLANGE
PRESSURE WINDOW**

CAGE CODE 1N0P6	PART NO. SEE TABLE	REV C
FILE: WINDOW1	DATE: 4/22/2000	SHEET: 1 OF 1