

HOLE "D" 8 PLACES.
LOCATED ON FIRST AND LAST FIN.

NUMBER OF FINS VARIES.

SPECIFICATIONS:

VSWR 1.10:MAX FULLBAND
MATERIAL 6061 ALUMINUM
PRESSURIZED
FINISH CHROMATE COATING
PAINT FLAT BLACK
OTHER FLANGE TYPES AVAILABLE.

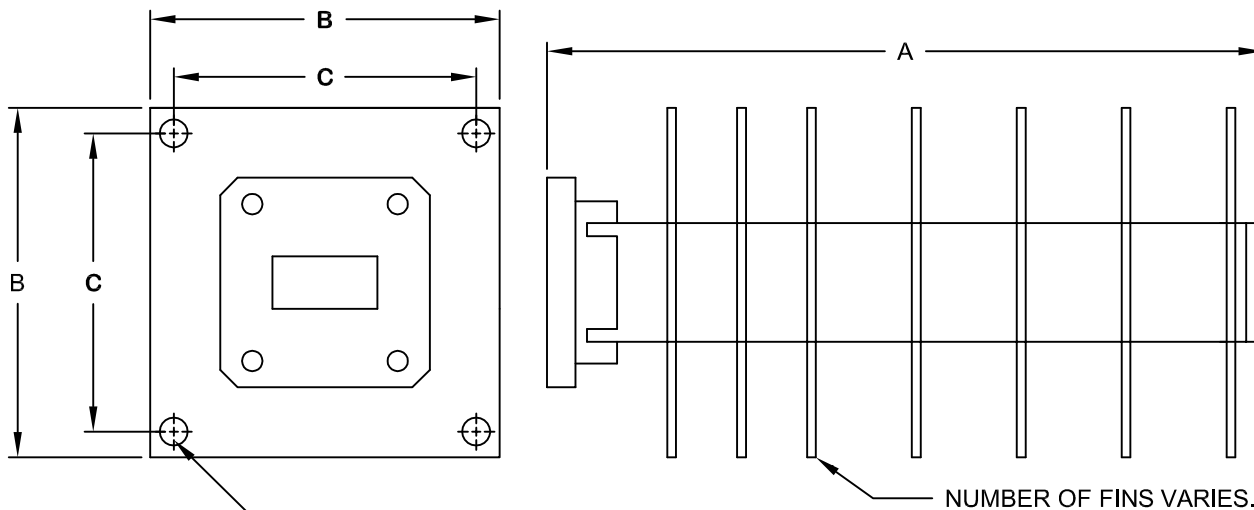
ACCESSORIES - CONSULT SALES DEPARTMENT FOR INFORMATION.
1- MOUNTING BRACKETS.
2- ALTHOUGH NOT REQUIRED FOR FULL POWER OPERATION,
A COOLING MANIFOLD CAN BE SUPPLIED.

WR	POWER HANDLING WATTS	P/N	FLANGE	DIMENSIONS IN INCHES				FREQ.(GHZ)
				TOL. ± 0.020				
				DIM A	DIM B	DIM C	DIM D	
28	250	2485-0000	SQUARE COVER	8.0	2.5	2.0	0.203	26.5-40.0
42	500	2484-0000	SQUARE COVER	7.5	3.5	3.0	0.203	18.0-26.5
62	1000	2483-0000	UG-1665/U	11.0	5.0	4.0	0.203	12.4-18.0
75	1000	2482-0000	SQUARE COVER	11.0	5.0	4.0	0.203	10.0-15.0
90	1000	2481-0000	UG-135/U	11.0	5.0	4.0	0.203	8.2-12.5
112	1000	2480-0000	UG-138/U	11.0	5.0	4.0	0.265	7.05-10.0
137	1500	2479-0000	CPR137F	9.5	5.0	4.0	0.265	5.85-8.2
159	1500	2478-0000	CPR159F	18.0	5.0	4.0	0.265	4.8-7.05
187	1500	2477-0000	CPR187F	14.0	5.0	4.0	0.265	3.95-5.85
229	1500	2476-0000	CPR229F	21.0	6.0	5.0	0.265	3.3-4.90
284	2000	2475-0000	CPR284F	15.0	6.0	5.0	0.265	2.6-3.95
430	2000	2474-0000	CPR430F	18.0	8.0	7.0	0.265	1.7-2.6
650	3000	2473-0000	CPR650F	35.0	10.0	9.0	0.265	1.14-1.73

MICROWAVE COMPONENTS & SYSTEMS
80 LYMAN STREET NORTHBOROUGH MA 01532

HIGH POWER LOAD

	DRAWING NO.	REV
	SEE TABLE	C
FILE: TERM5	DATE: 12/20/99	SHEET: 1 OF 1



HOLE "D" 8 PLACES.
LOCATED ON FIRST AND LAST FINS.

NUMBER OF FINS VARIES.

SPECIFICATIONS:

VSWR 1.10:MAX FULLBAND
MATERIAL 6061 ALUMINUM
PRESSURIZED
FINISH CHROMATE COATING
PAINT FLAT BLACK
OTHER FLANGE TYPES AVAILABLE.

ACCESSORIES:

- 1- MOUNTING BRACKETS.
- 2- ALTHOUGH NOT REQUIRED FOR FULL POWER OPERATION,
A COOLING MANIFOLD MAY BE SUPPLIED.

WR	POWER HANDLING WATTS	P/N	FLANGE	DIMENSIONS IN INCHES TOL ± 0.020				FREQ.(GHZ)
				DIM A	DIM B	DIM C	DIM D	
62	2200	2430-0000	UG-1665/U	19.0	5.0	4.0	0.265	12.4-18.0
75	2200	2431-0000	SQUARE COVER	19.0	5.0	4.0	0.265	10.0-15.0
90	2200	2432-0000	UG-135/U	19.0	5.0	4.0	0.265	8.2-12.5
112	2200	2433-0000	UG-138/U	19.0	5.0	4.0	0.265	7.05-10.0
137	3500	2434-0000	CPR137F	19.0	5.0	4.0	0.265	5.85-8.2
159	3500	2135-0000	CPR159F	19.0	5.0	4.0	0.265	4.8-7.05
187	3500	2136-0000	CPR187F	14.0	5.0	4.0	0.265	3.95-5.85
229	4000	2470-0000	CPR229F	24.0	7.5	6.5	0.265	3.3-4.90
284	4000	2471-0000	CPR284F	18.0	7.5	6.5	0.265	2.6-3.95
430	5000	2472-0000	CPR430F	18.0	8.0	7.0	0.265	1.7- 2.6

MICROWAVE COMPONENTS & SYSTEMS
583 BERLIN ROAD, MARLBORO MA

HIGH POWER LOAD

	PART NUMBER	REV
	SEE TABLE	B
FILE: TERM6	DATE 12/20/99	SHEET: 1 OF 1