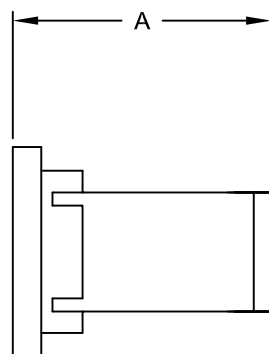
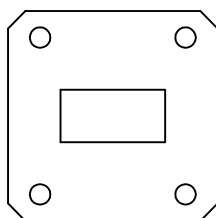


FEATURES:

- *LOWEST COST
- *SMALLEST SIZE

SPECIFICATIONS:

- VSWR 1.07: 1 MAX
- PRESSURIZED
- PAINT FLAT BLACK
- OTHER FLANGE TYPES AVAILABLE
- OTHER FREQUENCY BANDS AVAILABLE



NOTE -1 POWER HANDLING EITHER 5 OR 25 WATTS DESIGNATED BY
SUBSTITUTING 5 OR 25 FOR X IN PART NUMBER.

WR	POWER HANDLING WATTS	P/N	FLANGE	DIM"A"	FREQ.(GHZ)
62	SEE NOTE -1	2375-X	UG-1665/U	1.0	14.6-15.2
75	SEE NOTE -1	2426-X	SQUARE COVER	1.16	11.0-11.9
75	SEE NOTE -1	2406-X	SQUARE COVER	1.16	13.5-15.2
90	SEE NOTE -1	2380-X	UG-135/U	1.44	9.5-10.7
90	SEE NOTE -1	2381-X	UG-135/U	1.44	10.7-11.7
112	SEE NOTE -1	2419-X	UG-138/U	1.44	7.9-8.4
137	SEE NOTE -1	2444-X	CPR137F	1.5	5.85-6.425
137	SEE NOTE -1	2504-X	CPR137F	1.5	7.9-8.4
159	SEE NOTE -1	2182-X	CPR159F	1.70	5.85-6.425
187	SEE NOTE -1	2389-X	CPR187F	2.75	4.4-5.0
229	SEE NOTE -1	2462-X	CPR229F	2.5	3.7-4.2

MICROWAVE COMPONENTS & SYSTEMS
583 BERLIN ROAD, MARLBORO MA

LOW POWER TERMINATION

	DRAWING NO.	REV
	SEE TABLE	A
FILE: TERM2	DATE 12/20/99	SHEET: 1 OF 1