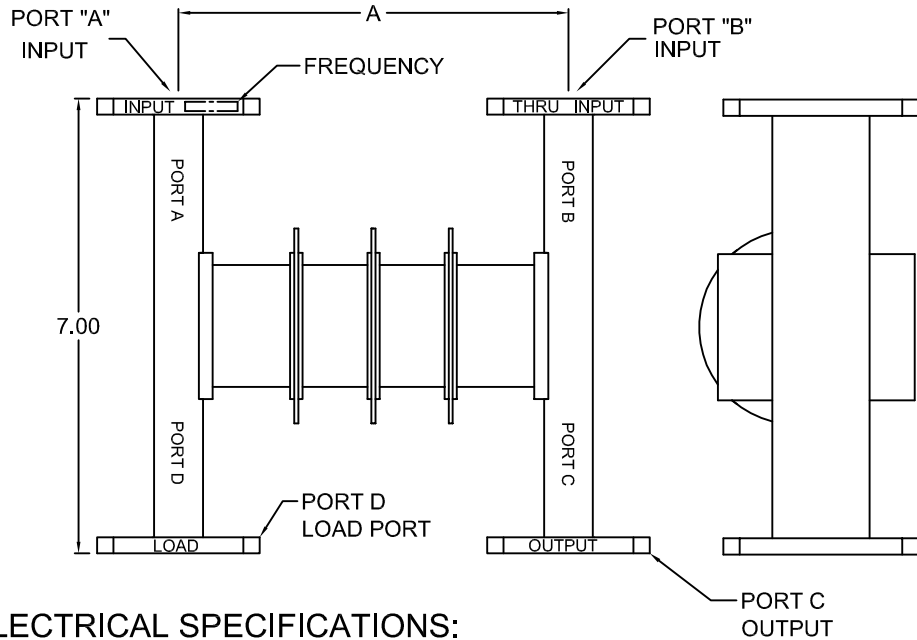


5.3 TO 6.3 INCHES (DEPENDENT ON FREQUENCY)



FEATURES

- * EXCELLENT COMBINING EFFICIENCY
- * HIGH POWER HANDLING
- * LOW INSERTION LOSS & VSWR
- * MULTIPLE CHANNEL COMBINING USING TWO OR MORE IN SERIES.
- * HIGH ISOLATION BETWEEN CHANNELS

MECHANICAL SPECIFICATIONS

MATERIAL - MATING FLANGES BRASS
 FINISH - HIGH TEMPERATURE BLACK
 FLANGES - WR 137 CPRG (GASKET GROOVED)
 PRESSURE - 10 PSIG MAX.
 TOLERANCES - 3 PLACES ± 0.10
 2 PLACES ± 0.20

ELECTRICAL SPECIFICATIONS:

FREQUENCY RANGE

PORT A-C _____ ANY 36 MHz BANDWIDTH
 in the 5.850 to 6.425 GHz Range
 PORT B-C _____ 5850 MHz TO 6425 MHz EXCEPT $F_o \pm 60$ MHz.

INSERTION LOSS

PORT A-C _____ 0.45 dB , $F_o \pm 18$ MHz.
 PORT B-C _____ 0.15 dB , $F_o \pm 60$ MHz or More

GROUP DELAY ($F_o \pm 18$ MHz)

PORT A-C _____ 4 nS.
 PORT B-C _____ 2 nS.

VSWR _____ 1.15:1 ALL PORTS.

ISOLATION

PORT A TO B _____ 40 dB MIN.
 PORT A TO C ($F_o \pm 60$ MHz) _____ 25 dB MIN.

POWER HANDLING

PORT A TO C _____ 3 KW MAX.
 PORT B TO C _____ 10 KW MAX.

MICROWAVE COMPONENTS & SYSTEMS MARLBORO MA 01752		
<h1>DIPLEXER</h1> <h2>WR-137</h2>		
	OUTLINE NO. <h3>4018-0000</h3>	REV -
FILE:DIP7	DATE 12/8/99	SHEET: 1 OF 1