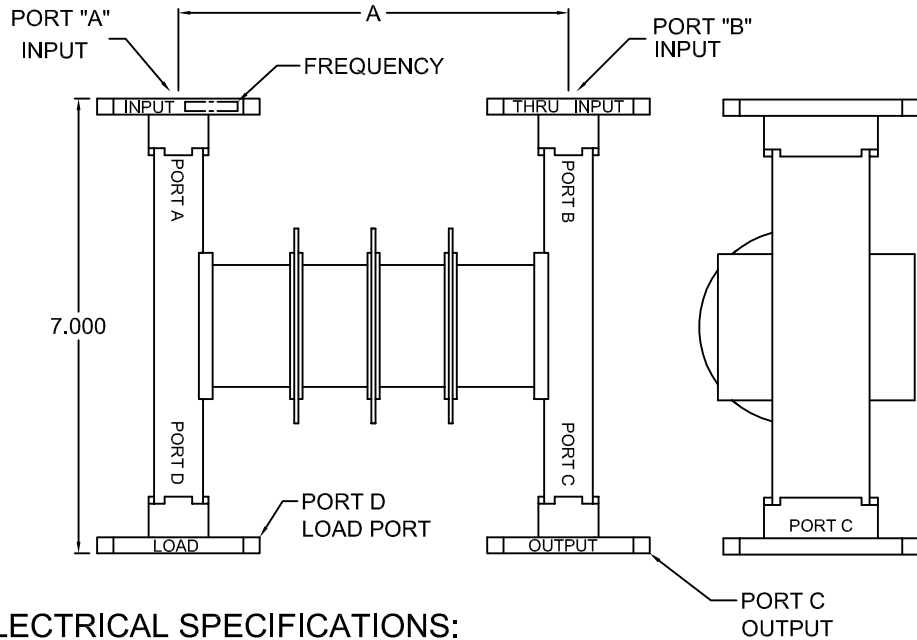


5.3 TO 6.3 INCHES (DEPENDENT ON FREQUENCY)



FEATURES

- \* EXCELLENT COMBINING EFFICIENCY
- \* HIGH POWER HANDLING
- \* LOW INSERTION LOSS & VSWR
- \* MULTIPLE CHANNEL COMBINING USING TWO OR MORE IN SERIES.
- \* HIGH ISOLATION BETWEEN CHANNELS

MECHANICAL SPECIFICATIONS

MATERIAL - MATING FLANGES BRASS  
 FINISH - HIGH TEMPERATURE BLACK  
 FLANGES - WR 159 CPRG (GASKET GROOVED)  
 PRESSURE - 10 PSIG MAX.  
 TOLERANCES - 3 PLACES  $\pm 0.10$   
 2 PLACES  $\pm 0.20$

ELECTRICAL SPECIFICATIONS:

<b>FREQUENCY RANGE</b>	
PORT A-C	ANY 36 MHz BANDWIDTH in the 5.850 to 6.425 GHz Range
PORT B-C	5850 MHz TO 6425 MHz EXCEPT $F_o \pm 60$ MHz.
<b>INSERTION LOSS</b>	
PORT A-C	0.45 dB , $F_o \pm 18$ MHz.
PORT B-C	0.15 dB , $F_o \pm 60$ MHz or More
<b>GROUP DELAY (<math>F_o \pm 18</math> MHz)</b>	
PORT A-C	4 nS.
PORT B-C	2 nS.
VSWR	1.15:1 ALL PORTS.
<b>ISOLATION</b>	
PORT A TO B	40 dB MIN.
PORT A TO C	( $F_o \pm 60$ MHz) 25 dB MIN.
<b>POWER HANDLING</b>	
PORT A TO C	3 KW MAX.
PORT B TO C	10 KW MAX.

 MICROWAVE COMPONENTS & SYSTEMS MARLBORO MA 01752		
<h1>DIPLEXER</h1> <h2>WR-159</h2>		
	OUTLINE NO. <h3>4002-0000</h3>	REV -
FILE:DIP3	DATE 12/8/99	SHEET: 1 OF 1